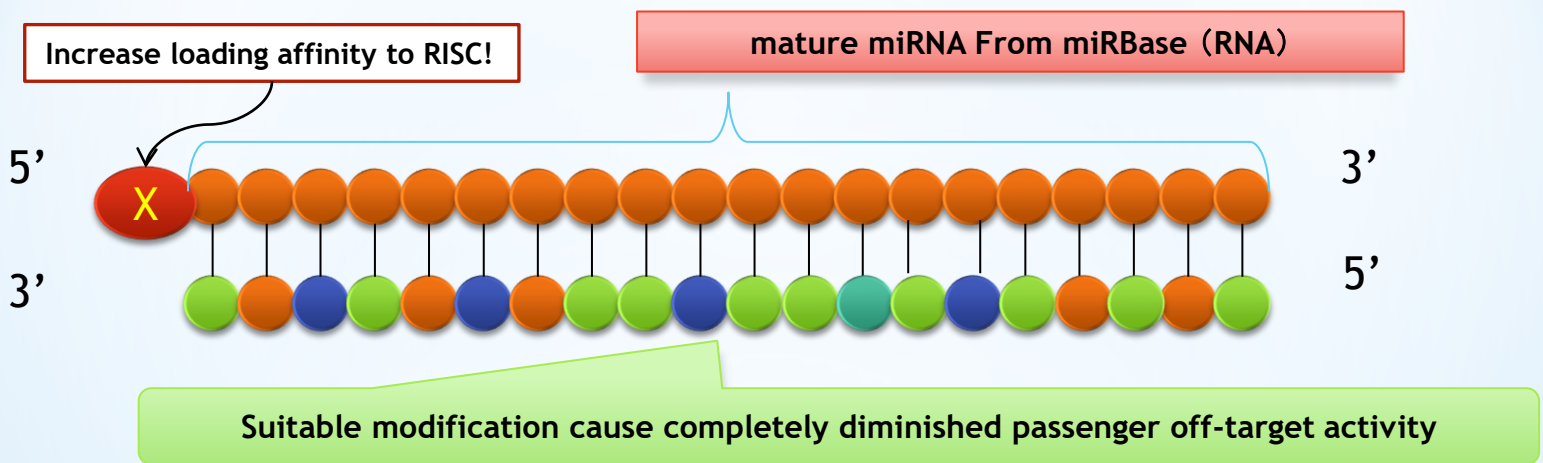
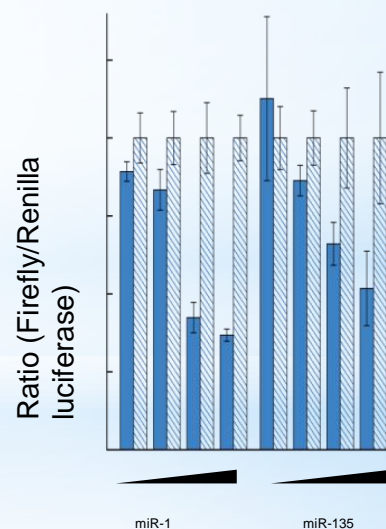
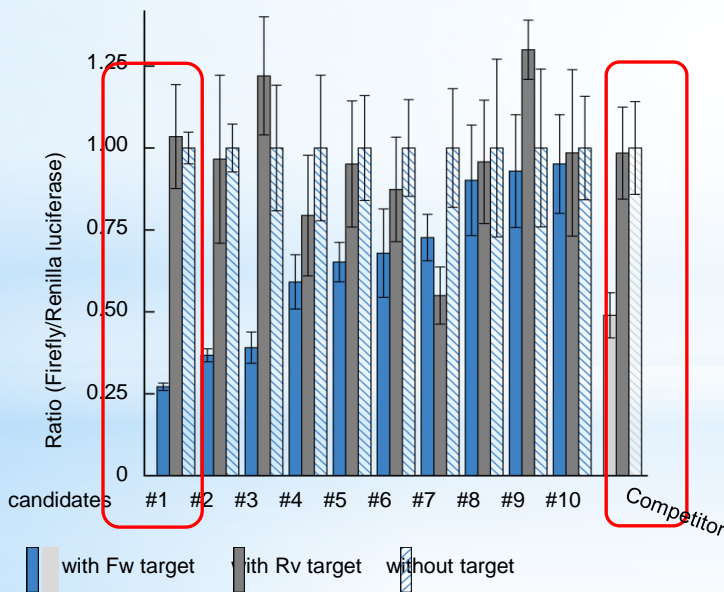


miRNA mimic



* **Reliable miRNA mimic shows well strand selectivity**



miRNA mimic Selectivity

Dose dependency of miRNA mimic

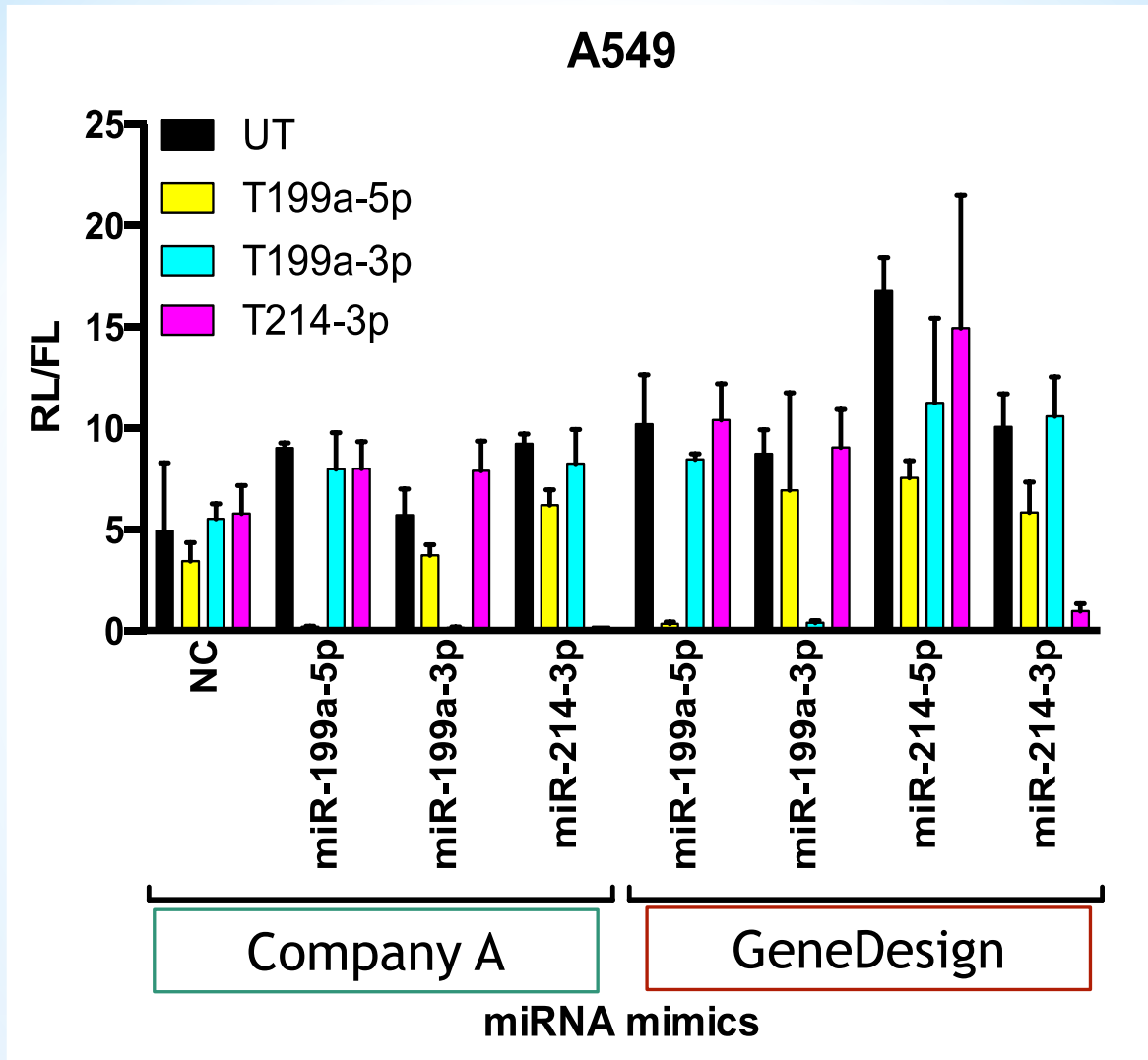
Contact Info

Ajinomoto Bio-Pharma Services Osaka

GeneDesign, Inc.

Phone: +81-72-640-5180 E-mail: gdi_info@jp.ajibio-pharma.com

GeneDesign's miRNA mimic has good selectivity



Kindly provided by Dr. Iba and Dr. Ito of Univ. Tokyo

Application

- microRNA Replacement for cancer research
- Supplement endogenous microRNA activity to discover the functional roles of individual microRNAs in human, mouse, or rat with custom synthesis